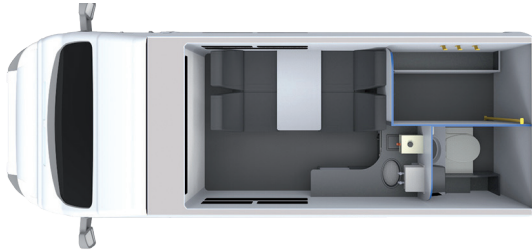




ON-DEMAND, ON-SITE, ON-TIME.

WELFARE VAN

A HISTORY OF INNOVATION



STANDARD SPECIFICATIONS:

| | |
|--|-------------------------------------|
| Product Code | 10000 |
| Unit Name | Welfare Van |
| Dimensions | 6.1 x 2.4m / 20 x 8ft |
| Configuration | Seating area / Toilet / Drying room |
| Weight | 2850kg |
| Fuel capacity | 80L / 17.5gal. |
| Water tank capacity | 45L / 10gal. |
| Waste tank capacity | 20L / 4.3gal. |
| 7 USB charging points | 12V and USB |
| Cubicle | 1 |
| Internal control panel for all heating, lighting and welfare facilities | ✓ |
| PIR lighting | ✓ |
| Fully insulated throughout | ✓ |
| Canteen area (Sink, hot water boiler, microwave, waste bin, seating for 4) | ✓ |
| Private W.C area & Cartridge toilet | ✓ |
| Front and rear LED beacons | ✓ |
| Overhead storage area | ✓ |
| Drying room on the new ranges | ✓ |

MIN 1 WEEK HIRE

Our van is ideal for a whole multitude of site environments by the very nature of its all inclusive design which brings transport and site welfare facilities together in one solution. Our brand new fleet conforms to the latest Type Approval regulations.

KEY FEATURES:

- Private W.C with eco-flush toilet
- Canteen area with sink, instant hot water & microwave
- Overhead storage area
- Chapter 8 regulation livery, front and rear LED beacons
- VOSA specification seat belts
- Drying room and storage area
- Cassette system on latest model

OPTIONAL EXTRAS AVAILABLE

- WiFi 
- Waste & water Servicing
- Water dispenser
- Additional mileage pack available
- First aid kit
- Fire extinguisher

